



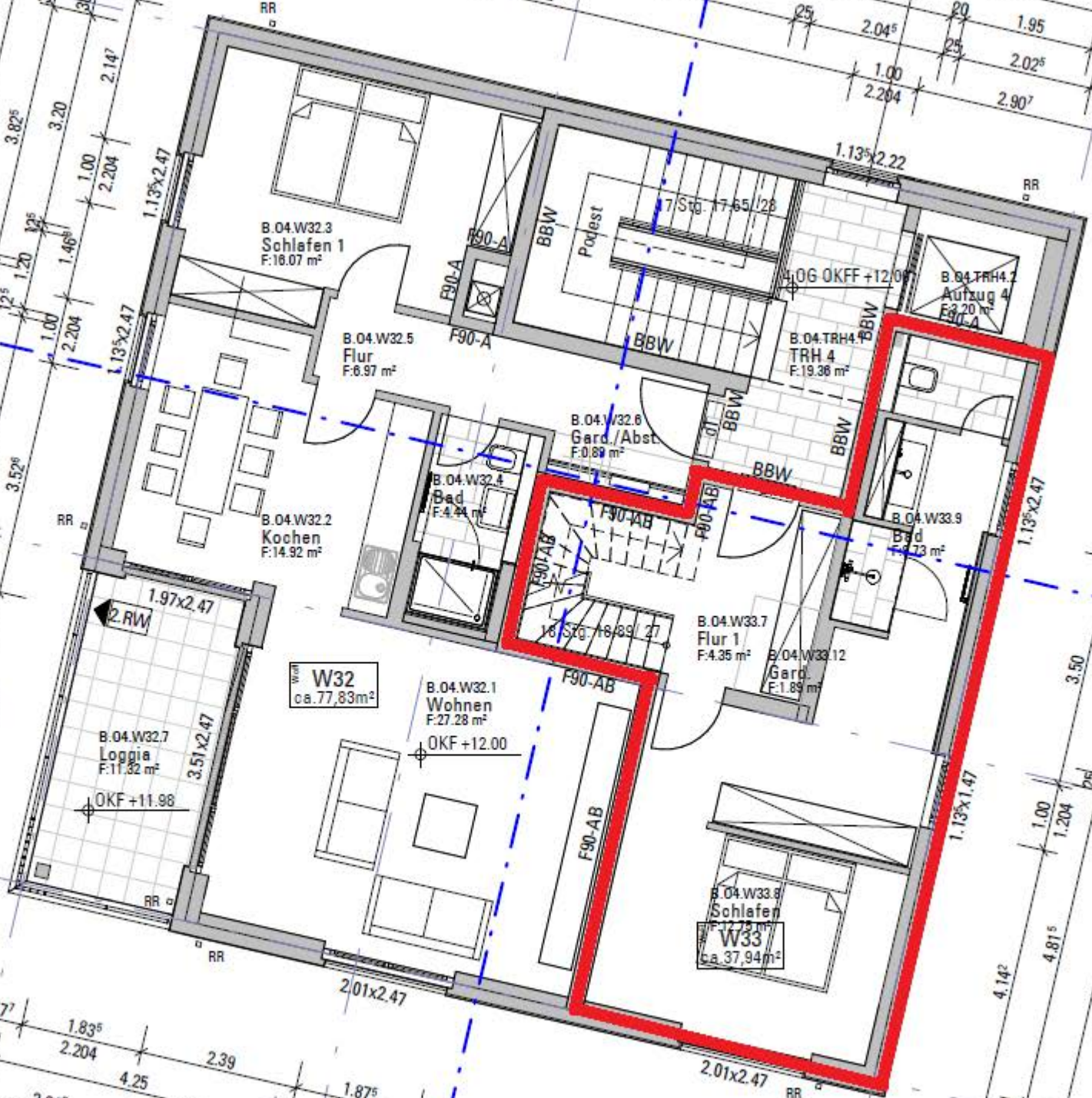
5B

6B

4B

5B

6B



8.115

13.525

5.00

4.845

4.815

3.377

2.204

1.97x2.47

3.51x2.47

1.13x2.47

1.13x2.47

1.13x2.47

1.13x2.47

1.13x2.47

1.13x2.47

1.13x2.47

1.13x2.47

1.13x2.47

1.13x2.47

1.13x2.47

1.13x2.47

1.13x2.47

1.13x2.47

1.13x2.47

1.13x2.47

1.13x2.47

1.13x2.47

1.13x2.47

1.13x2.47

1.13x2.47

1.13x2.47

5.00

4.815

4.815

3.50

2.275

1.85

1.00

2.204

1.85

1.00

3.893

3.05

1.84

41

41

2

8.115

13.535

5.00

4.142

1.00

1.204

4.815

5.00

10.85

2.275

1.00

2.204

1.85

5.15

11.025

4.32

6.55

1.875

2.204

1.262

3.62

5.67

1.59

2.204

1.875

2.204

1.59

2.204

1.875

2.204

1.875

2.204

1.875

2.204

1.875

2.204

1.875

2.204

1.875

2.204

1.875

2.204

2
4101

5B

6B

MB

